

An aerial photograph of a highway construction site. A multi-lane highway runs diagonally across the frame. In the center, a bridge structure is under construction, with a large concrete pillar and a steel framework. The surrounding area is a mix of dirt, gravel, and construction equipment, including trucks, excavators, and various materials. The highway has several lanes with cars and trucks moving. The overall scene is one of active infrastructure development.

Drone Data

Adding Value to Business

SenSat®

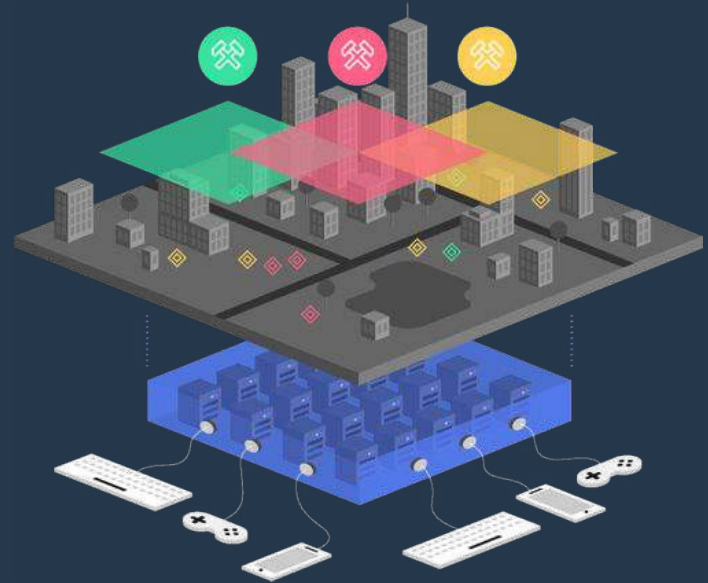
Designed and created by SenSat® 30 City Road, London, United Kingdom, EC1Y 2AB

Our mission

The real world is offline; it can't connect with computers or other devices.

SenSat's mission is to build the third platform, an intelligent eco-system that translates the real world into a version understandable to AI. This technology will help us to build a more sustainable future, using the wealth of new insight to help people make better decisions.

We do this by creating digital twins, or digital representations of real world locations - then infusing real time data sets from a variety of sources. The result is an accurate, digital and up to date copy of the real world in a machine-readable format.



Understand the business need to deliver value

Data captured by drone isn't useful if it doesn't deliver on a business pain -
it needs to fit within the wider 'data mix' of a business/project

Satellite:

- GSD: 50cm/px
- Resolution: 500MP
- Altitude: 700,000m (2,300,000ft)

Planes:

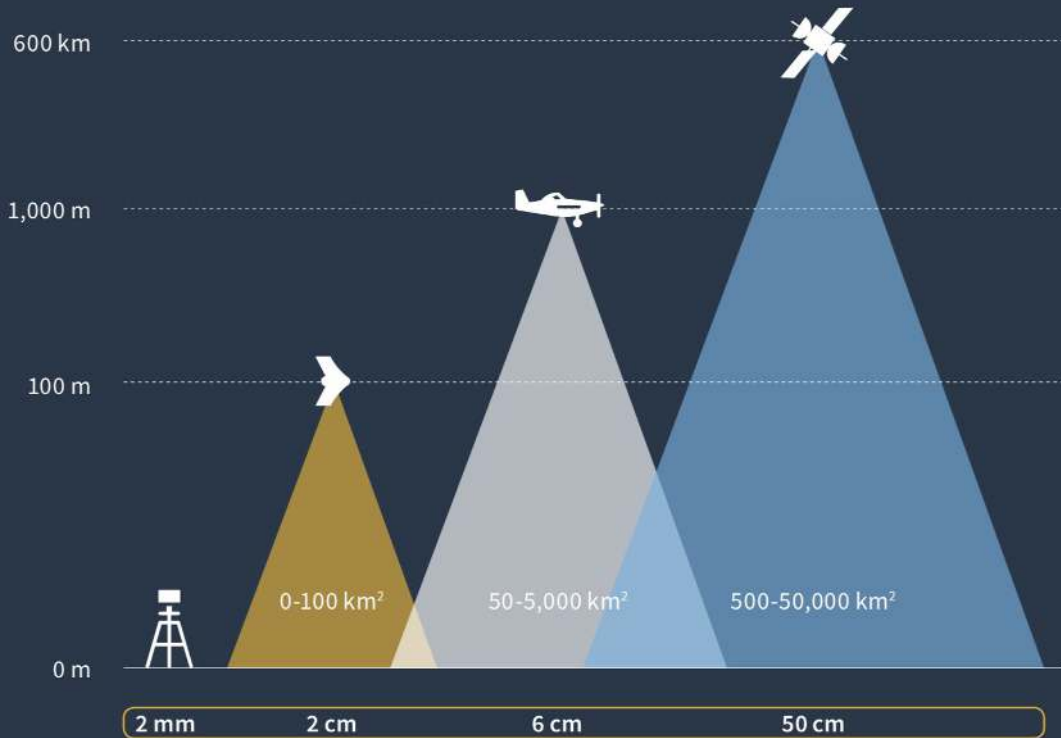
- GSD: 10cm/px
- Resolution: 260MP
- Altitude: 3,000m (10,000ft)

Drones:

- GSD: 2.5cm/px
- Resolution: 20MP
- Altitude: 100m (350ft)

Phones:

- GSD: >0.5cm/px
- Resolution: 12MP
- Altitude: Ground

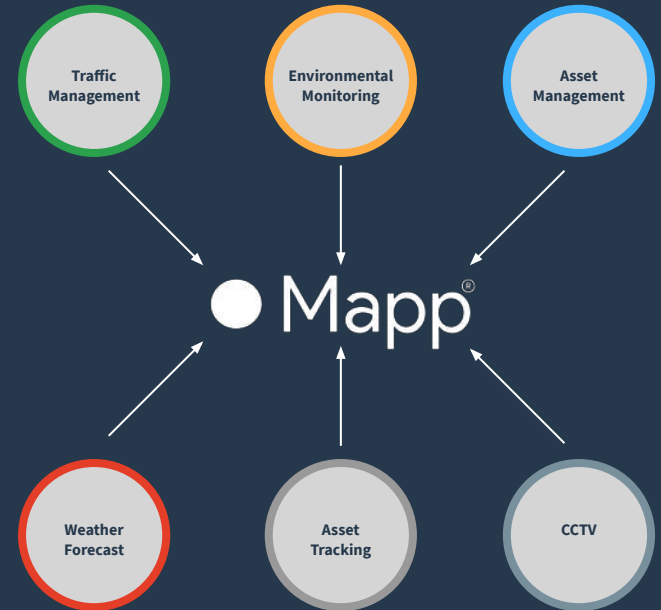


Creating your Digital Twin

Mapp® supports various data integrations to enable your site to benefit from a full digital. To support this, SenSat offer a suite of datasets and integrations that give your project greater levels of detail and context. These datasets are all integrated into Mapp®. The following are available for your site:

- Driven and Terrestrial LiDAR
- Ground Penetrating Radar (GRP)
- Satellite Data
- Weather Forecasts
- Internet of Things (IoT)
- Environmental Monitoring
- Real-time asset information (e.g. tilt and vibration sensors)
- People and asset tracking
- Traffic Monitoring
- CCTV integration

Please ask the Customer Success team for more information via support@sensat.co.uk





Your package includes SenSat data + Mapp® platform, for unlimited users.

SenSat Provided Data

3D Topographic Data
E.g. Point Cloud

IoT Sensor Data
E.g. Environmental Monitor

General Data
E.g. Weather Forecast

Context
E.g. Wikipedia



Mapp® Features



Point Cloud
Power



Click to
measure



Single
Source



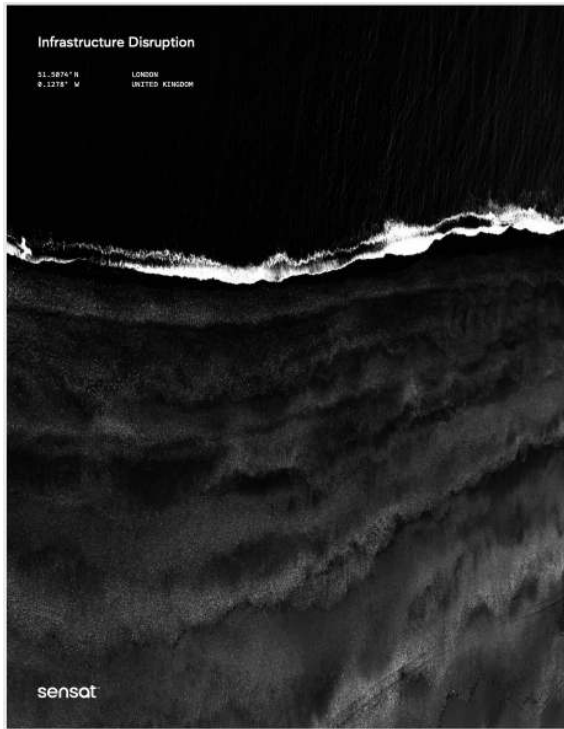
Real-time
Collaboration



3rd Party
Integration



Real-time
data



Infrastructure Disruption

<https://www.sensat.co.uk/digital-disruption-whitepaper>



A new world of Mapping

<https://www.sensat.co.uk/the-new-world-of-mapping>